

Starwood Hotels and Resorts Worldvive Inc. is one of the leading hotel and leisure companies in the world and W brand is its contemporary brand.

The twin structure is sited in the new development district of Al Abdali in Amman, Jordanian capital. The mixed-use development includes 6-storey office space podium and it will also include a 30-storey tower housing a 5 star hotel operated by Hotels Worldwide Operators and low-rise Saraya Abdali Real Estate Investment PSC Headquarters.

The 176m levels hotel and 64m Saraya Headquarters building are connected by bridges at most levels for a gross built up area of 78,620m² and a net post-tensioned slab area of 63,500m²

The tower's spectacular cantilevered south-east corner with a 12.5m span over a lower small block creates the effect of a 30m deep canyon within the tower.

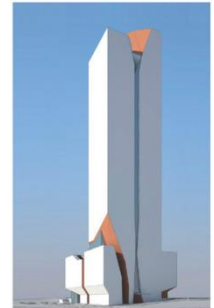
Freyssinet Jordan scope of work is supply and supervision of post-tensioned slabs starting from 8th basement up to the roof level (49 Floors). The selected system is mono strand B range.

New structures

Post-Tensioning Works

Saraya hotel and Tower

Amman - Jordan



Client

Saraya Abdali Real Estate

Consultant

E-construct

Contractor

Dubai Construction Co. (DCC)

Construction

2014