

The installation of a 100 m² steel platform at 13th level induces additional loads on the concrete structure. One beam needs to be strengthened to support bending moments.

Freyssinet was approached by the Contractor to supply, and execute the beam strengthening by Carbon Fiber Reinforced Polymer (CFRP).

As per the design drawings and specifications, 1.2 mm CFRP laminates have been installed in accordance with the following steps:

1. Surface preparation: grinding and surface levelling due to poor substrate quality
2. Application of a first layers of laminates at the top and bottom of the beam
3. Application of a second layer of laminates at the top of the beam

Freyssinet Gulf LLC, PO Box 36211, Dubai, UAE

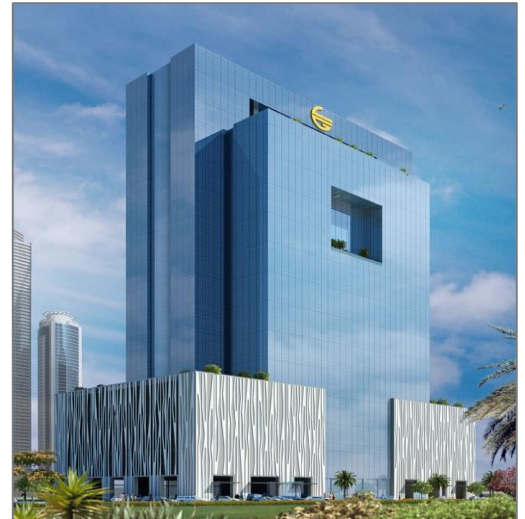
Tel: +971 4 2094 900 - Fax: +971 4 2094 910

fme@freyssinet.sofr.me www.freyssinet-me.com

Repairs

Beam Strengthening

Landmark Offices Building
Dubai - UAE



Client

Landmark Asset Holding
limited

Consultant

Archgroup

Contractor

Shapoorji Pallonji Mideast LLC

Construction 2 days